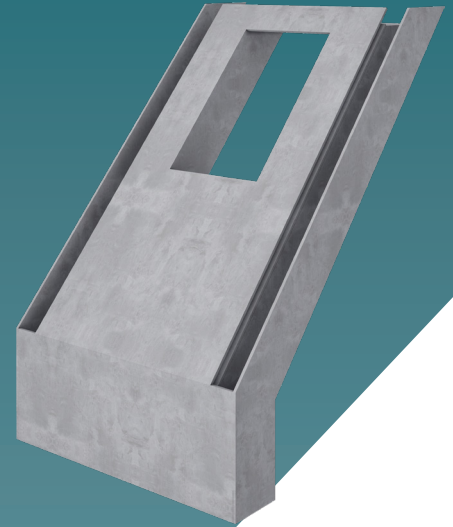


VST roof dormer

The VST roof dormer is a formwork element that consists of 24mm thick cement-bonded particle boards (CBPB). Thanks to this precisely fitting solution for the roof connection quick, professional and long-lasting installation is possible. All types of breakthroughs and openings as well as the installation of built-in parts (e.g. electrical wire) are also carried out at the factory. The VST elements are transported to the customer's construction site and moved there according to the assembly plan and then poured with concrete. The concrete core connects to the formwork element; stripping is not necessary. After the core concrete has hardened, the formwork element itself does not assume any load-bearing function.



OVERVIEW

- Any size and angle configuration possible
- Custom-fit solution with an exact window cutout
- Low weight: easy placement on site
- Smooth surface and ready to use for on-site decorating
- High degree of prefabrication and easy installation

CONTACT

VST BUILDING TECHNOLOGIES AG
info@vstbt.com www.vstbt.com

TECHNICAL KEY DATA

MODELS



Single angle

Double angle

STANDARD THICKNESS

175mm, 200mm, 215mm, 230mm, 250mm, 300mm

The architectural dimensions result from the thickness of the concrete core plus 24mm on both sides for the CBPBs.

WEIGHT

Up to 70kg/m² (without reinforcement and built-in installation parts)

HEIGHT

Elements with width up to 2.90m up to 2.90m total height. Elements with width lower than 2.90m up to 6.25m total height

WIDTH

Up to 6.25m per individual element with a total height of up to 2.90m. Special size possible, depending on transportation possibilities.

CONCRETE QUALITY

The concrete must comply with EN 206 and meet the following requirements: strength class according to static requirements, spreading dimension ≥ 66 cm, max. aggregate size ≤ 16 mm.

CEMENT-BONDED PARTICLE BOARD

Harmonised technical specifications in accordance with EN 13986:2004, fire resistance A2-s1, d0, flexural strength ≥ 9.0 N/mm², transverse tensile strength ≥ 0.5 N/mm², swelling resistance max. 1.5%, moisture resistance max. 1.5%.

MANUFACTURER

VST Production s.r.o.
Novozámocká 179, 949 01 Nitra, Slovakia